

PENSTOCK series ESA-R-O

For flow regulation

PRODUCT DESCRIPTION

ESEP penstock used for surface water, sewers and other aggressive environments. Series ESA-R-O is fitted with a non-rising spindle. Slider and back plate are fabricated out of HDPE, frame and reinforcement bars AISI 316L. EPDM rubber seals in sliding plate and EPDM rubber seal between back plate and wall. The spindle is AISI 316 trapezoid right handed thread Li, pitch 4, 5 or 6 depending on the specific type. Mounting by means of chemical anchors or mould in anchors. Maximal operating pressure of 5 mWC. Optional control by T-key or cranked handle.

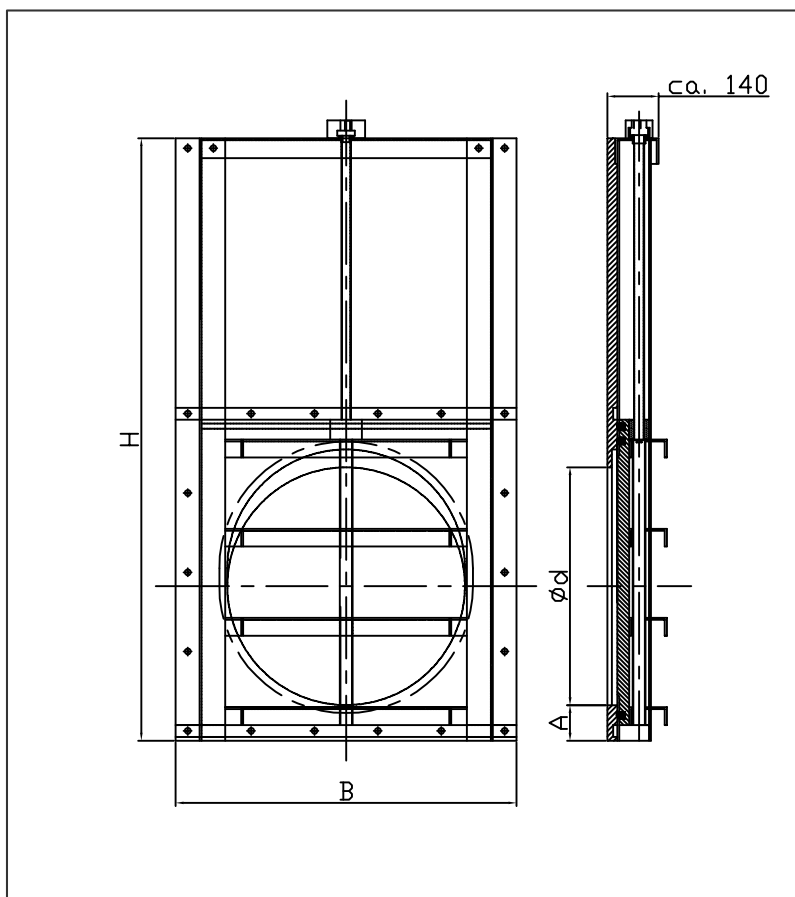
APPLICATIONS

The penstock gates are widely used in surface water, sewers, disposal systems with a pump and other aggressive environments where return flow needs to be prevented.

QUALITY

- Sliding- and back plate fabricated out of HDPE
- Frame and reinforcement bars AISI 316L
- EPDM rubber seal in between slider and housing, housing and wall
- Maximal operating pressure of 5mWC
- Maximum leakage allowed in accordance with DIN19569-4 class 3

DRAWING*



SPECIFICATIONS

Type	Ø d*	A*	B	H	Rotations open/closed	Kg.
ESA-R-O 150	150	80	360	620	80	19
ESA-R-O 200	200	80	400	700	92	22
ESA-R-O 250	250	80	450	800	105	26
ESA-R-O 300	300	80	500	900	132	33
ESA-R-O 400	400	90	600	1120	110	44
ESA-R-O 500	500	90	700	1320	130	65
ESA-R-O 600	600	90	860	1520	150	90
ESA-R-O 700	700	90	960	1720	170	111
ESA-R-O 800	800	100	1060	1940	190	141
ESA-R-O 900	900	100	1160	2140	180	175
ESA-R-O 1000	1000	100	1260	2340	167	210

A* = Distance to flow line

Ø d* = Bore diameter

Drawing* = Principal drawing

Other dimensions and special editions on request.