

# ORIFICE PLATE FLOW CONTROL

For control of the water flow

## PRODUCT DESCRIPTION

**ESEP** flow control, **OP series**, is perfectly suited for the control of water flows. By varying the diameter of the hole in the flow limiting plate, the flow throughput can be controlled. By using the drawcable/ -bar the plate can be moved into or out of the mounting bracket.

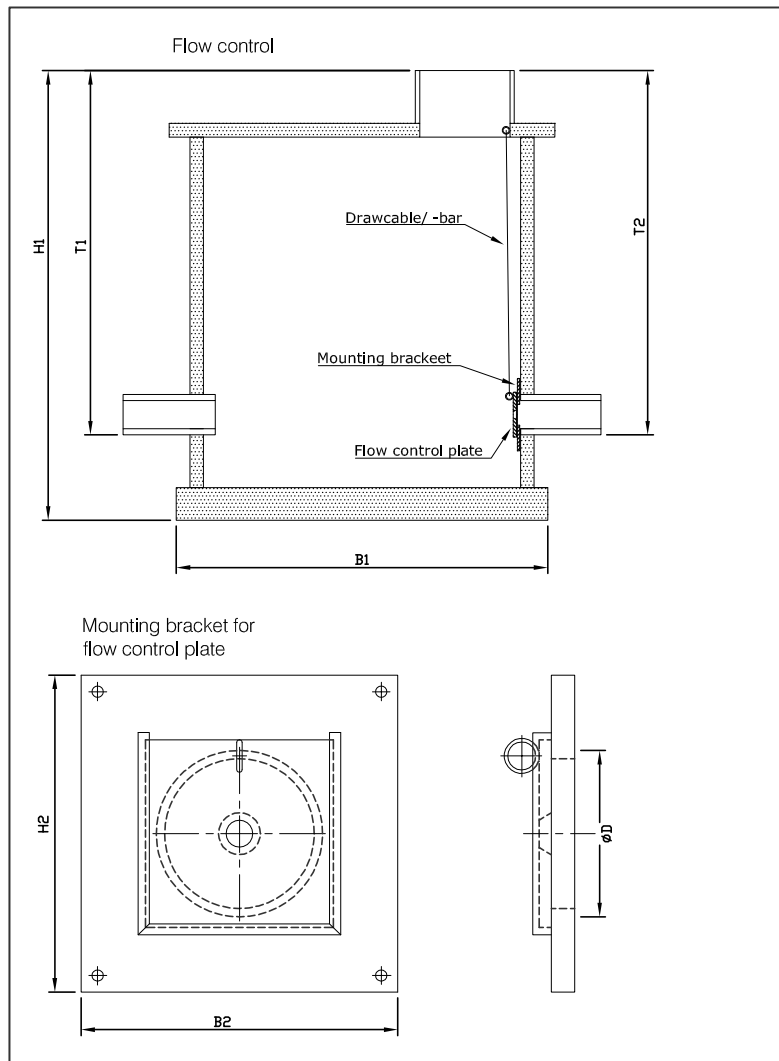
## APPLICATIONS

The orifice plate flow control is perfectly suited as a flow limiter in overflow basins, surge basins, combined and rainwater sewer systems, industrial waste and open waterways. Furthermore, the EVD flow control serves as a good flow limiter for separators and industrial water treatment

## QUALITY

- No moving parts
- Highly durable
- Demountable
- Easy to install
- Low investment

## DRAWING



## SPECIFICATIONS

Specifications are dependent on the type of flow control used.