

## INTEGRATED OIL SEPARATOR HDPE (underground)

With coalescing filter <5 mg/l  
For light mineral liquids (e.g. oil and petrol)

### PRODUCT DESCRIPTION

**ESEP** HDPE "integrated oil separator" for light mineral liquids, with integrated sludge trap, **series PE.MI 7000 HV/E** (suitable for placement underground). Capacity **3, 6, 10 en 15 l/s**. Equipped with odour trap on the inlet side and HDPE automatic closure device on the outlet side, **provided with coalescing filter**. Manhole cover class B 125 kN (round cast iron cover on concrete base) or class D 400 kN (concrete plate with cast iron cover on concrete base). The shaft height is to be adjusted during installation by the party responsible for installation.

### APPLICATIONS

Oil and sludge separators are frequently used when light liquids (e.g. oil and petrol) might be released into the water flow, for example in:

- Automotive companies
- Engine overhauling
- Petrol stations
- Car washes
- Industrial areas
- Parking lots
- Storage areas
- Environmental parks
- Unloading zones

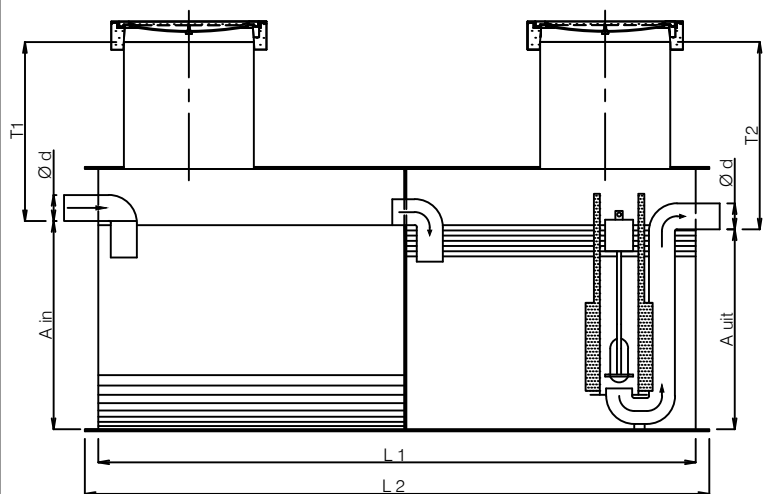
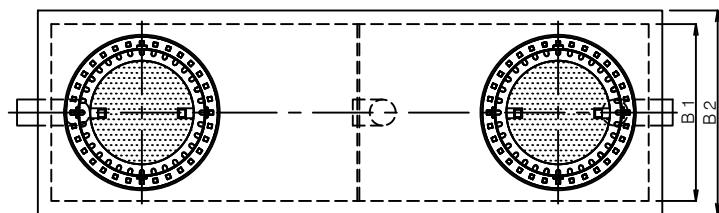
### QUALITY

- Capacity determined, dimensioned and tested according to NEN-EN 858
- With HDPE odour trap on the inlet side and HDPE automatic closure device on the outlet side, certificate no. PA-4950177-01
- Body consists of very durable, steel reinforced HDPE
- CE certified

Manhole cover:

- Class B 125 kN (round cast iron cover on concrete base)
- Class D 400 kN (concrete plate with cast iron cover on concrete base, including rubber ring)

### DRAWING



### SPECIFICATIONS

Type	l/s	I*	O*	L1	L2	B1	B2	Ø d	A in	A uit	T1	T2	Kg.
PE.MI 7003 HV/E	3	650	70	1920	2000	940	1000	125	865	845	155-755	175-775	350
PE.MI 7006 HV/E	6	1200	120	2920	3000	940	1000	125	1350	1330	160-760	180-780	500
PE.MI 7010 HV/E	10	2000	200	2920	3000	1440	1500	160	1320	1300	200-800	320-820	850
PE.MI 7015 HV/E	15	3000	300	3420	3500	1940	2000	200	1280	1260	240-840	260-860	1250

I\* = Volume of the sludge trap (litres).

O\* = Oil storage volume (litres).

Custom dimensions available on request.

\*\* N.B. Maximum level of ground covering 500 mm. When high groundwater level, intensive traffic or deeper placement is present, extra precautions have to be made. Factory warranty on water tightness up to the usual aquiferous range.